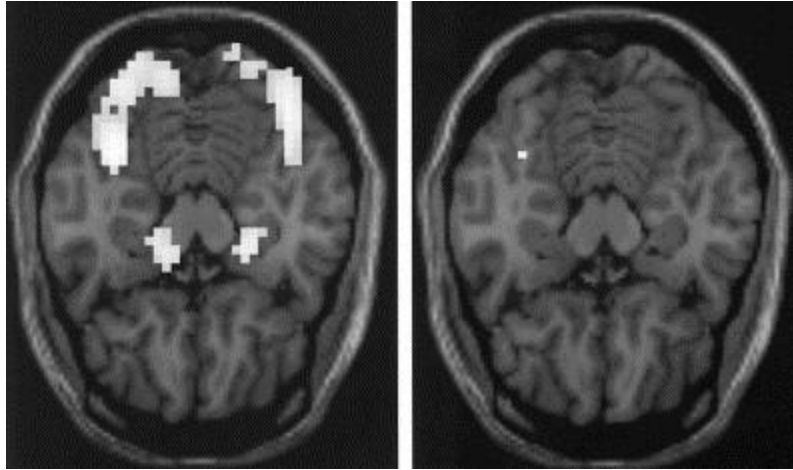


## BRAIN SCAN OF FEMALE PATIENTS PRESENTED WITH EMOTIONALLY AVERSIVE SLIDES



Response to the presentation of emotionally aversive slides in female patients with borderline personality disorder (left) and in normal volunteers (right). Activation in the bilateral amygdala and in the fusiform gyrus is shown on the axial slice (z axis = -16) in borderline personality disorder, but not in healthy volunteers: Data result from fixed-effects analyses with activation set at a threshold of corrected  $p = 0.0001$ .

<http://www.sciencedirect.com/science/article/pii/S0006322301010757>